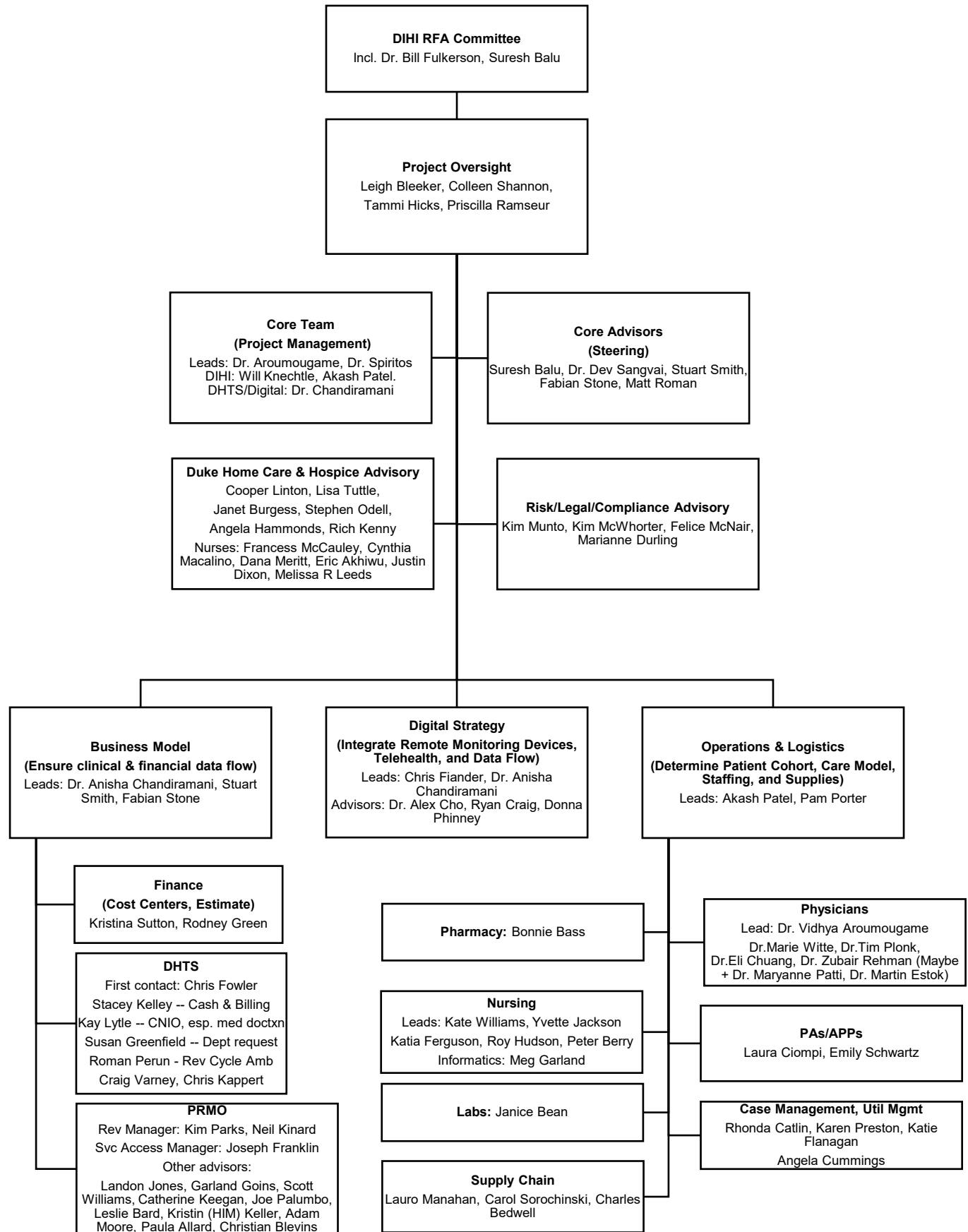




Stakeholder Organizational Chart





Contacts

Please contact one of the following individuals if the contents of this document need clarification:

| Role | Contact | Email (Phone) |
|--------------------------------------|-------------------------|--------------------------------------------------------------------------------|
| Clinical Lead - DRAH | Dr. Vidhya Aroumougame | vidhya.aroumougame@duke.edu |
| Operational Lead - DRAH | Dr. Michael Spiritos | michael.spiritos@duke.edu |
| Project Manager - DIHI | William Knechtle | william.knechtle@duke.edu |
| Logistics Lead - DIHI | Akash Patel | akash.d.patel@duke.edu |
| Supplies and Logistics Lead | Pam Porter | pam.porter@duke.edu |
| Duke Health Technology Services | Dr. Anisha Chandiramani | anisha.chandiramani@duke.edu |
| Duke Health Technology Services | Christopher Fiander | christopher.fiander@duke.edu |
| DUHS Corporate Finance | Stuart Smith | stuart.smith@duke.edu |
| Patient Revenue Management Office | Fabian Stone | fabian.stone@duke.edu |
| DRAH Nurse Admin, Informatics | Meg Garland | meg.garland@duke.edu |
| DHCH Manager, Nurse Infusion | Yvette Jackson | yvette.jackson@duke.edu |
| Medtronic InterView (remote monitor) | Angela Hammonds | angela.dennis@duke.edu |
| DRAH Nutrition Services Lead | Lisa Marker | lisa.marker@duke.edu |

Partners external to Duke University Health System:

| Role | Company | Email |
|------------------------------------|-----------------|----------------------------------------------------------------------------------------------------|
| Non-Emergency Transport | First Choice | marcus@firstchoicemedicaltransport.com |
| Emergency Transport | Wake County EMS | jeff.williams@wakegov.com |
| Durable Medical Equipment Supplier | Adapt Health | Contact through: patricia.kramer@duke.edu |
| Imaging Services | National Mobile | Contact through: bill.trofi@duke.edu |
| Remote Monitoring Devices | Medtronic | john.n.broadhurst@medtronic.com |